

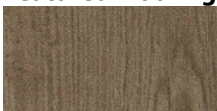
Hakuhoukai Tokyo Spine Hospital



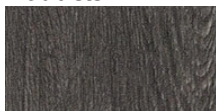
Hakuhoukai Tokyo Spine Hospital, located in the centre of Tokyo and with a total of 78 beds and a floor area of 5,100 m², specialises in spine surgery. Most parts of the hospital are carpeted, and Flotex was chosen to combine cleanability and design. Flotex has been tested for wheelchair and bed mobility and has been well received by patients. Safestep R11 safety vinyl flooring was chosen for the kitchen and other wet spaces and Colorex electrostatic conductive tiles for the operating theatre.

Location	Tokyo, Japan
General Contractor	JGC Japan Corporation
Architect	JGC Japan Corporation
Interior Design	Nobushige Ochi (JGC Japan Corporation)
Floor Design	Eri Nagata (Paramount Bed CO., Ltd.)
Photography	Abe Shinji

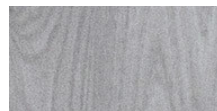
Featured Flooring Products



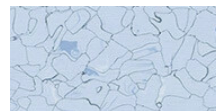
Flotex Wood planks
American wood



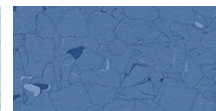
Flotex Wood planks
black wood



Flotex Wood planks
silver wood



Colorex EC
pacific



Colorex EC
blue ridge

